



# TIMBER IMAGINEERING

## TIMBER ENGINEERED SOLUTIONS

### WHO WE ARE:

Timber Imagineering designs and fabricates timber structures using various sustainable engineered wood products such as Glulam and HySpan LVL. By fabricating in a shop controlled environment we are able to produce high-quality structural components with maximum precision.

We are a unique company with 40 years of combined experience in design and fabrication of timber structures. Let us help you create your innovative timber structure.

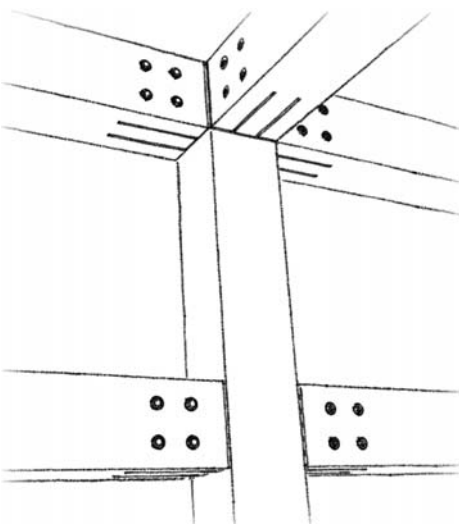
### WHAT WE DO:

Timber Imagineering is recognized for our ability to assess, determine and meet the client's needs. Our experience and knowledge allows us to analyse, design and fabricate structural timber systems to strict deadlines. We continuously exhibit strength in generating accurate, creative, innovative and economical structural solutions.

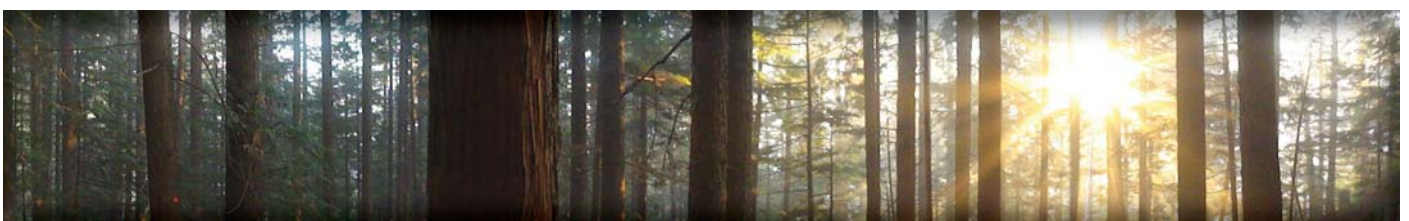


### WHAT WE HAVE TO OFFER:

In order to provide our clients with the most economical and innovative building systems, Timber Imagineering offers an integrated engineering service. Although we have the versatility to cater to any project, some of our products and capabilities include:



- 1) ENGINEERING DESIGN SERVICES
- 2) PROJECT MANAGEMENT
- 3) TIMBER FABRICATION
- 4) CUSTOM LONG-SPAN TRUSSES
- 5) SPECIALISED TIMBER FRAMES
- 6) TIMBER CONCRETE COMPOSITE
- 7) CNC MACHINING
- 8) PREFABRICATED TIMBER PANELS
- 9) PRORAFTERS
- 10) ERECTION SERVICES
- 11) INNOVATIVE FASTENING SYSTEMS



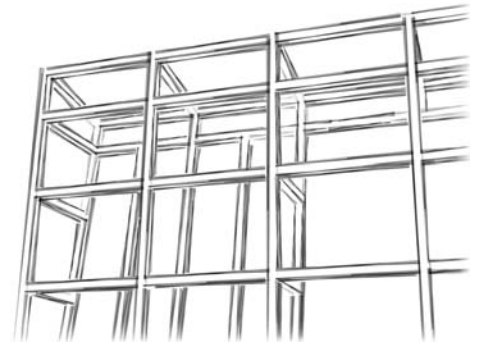
## OUR PROJECTS:

With over 40 years combined experience providing timber design-build solutions we've designed, supplied and fabricated several projects to satisfied clients.

### THE ATRIUM

SYDNEY, NEW SOUTH WALES

A fully prefabricated timber system constructed in our Victoria workshop and delivered to Sydney, all components were prefinished prior to erection. Our integrated design-build team was able to see this project through from inception to completion.



The 280mm x 280mm GL18 Vic Ash Glulam sections were carefully fabricated in our shop to a high level of detail. All connections were test-fitted in shop to ensure accuracy on site, resulting in an easy and effective installation. Timber Imagineering brought the Architect's dream to life by drawing on the experience of our designers and detail-oriented shop team.

### DEPARTMENT OF ENVIRONMENT AND PRIMARY INDUSTRIES

ATTWOOD, VICTORIA

This project involved the design, fabrication, delivery and install of 21 meter span HySpan LVL portal frames at 6 meter bay spacing. The timber components were prefinished in the workshop and delivered to site. The tapered column and rafter sections allowed for an effective yet graceful design. The design-build system allowed for the portal frames to be erected in liaison with the builder in a single day. Given the project's success we are currently fabricating Stage Two.



## CONTACT US:

Call us for a quote on design, fabrication or integrated design-build services for your next timber project.

ProRafter \* ProJoist \* Panelised Roof & Walls \* Barns \* TCC (Timber Concrete Composite) \* Stress Skin \* Portalised Systems \* LVL \* I-Joist \* Box Beams \* LVL Studs \* LVL Plate systems \* Installation \*

20 Sydney Rd, Bayswater 3153  
(p) 03 9780 4863

w. [www.timberimagineering.com](http://www.timberimagineering.com)

e. [office@timberimagineering.com](mailto:office@timberimagineering.com)  
(f) 03 9780 4867

